

BIG SLICK
POKER



**Big Slick Mobile Edition:
User Guide**

Copyright © 2006-2007 SEYS Technologies

INTRODUCTION...	1
Key Features:	1
GETTING STARTED.....	1
MAIN SCREEN.....	2
ACTION SECTION.....	3
BLINDS SECTION... ..	4
CHIP SELECTION SECTION.....	5
PAYOUT CALCULATOR SECTION.....	6

Introduction...

Big Slick Mobile Edition is the most user friendly Texas Holdem' tournament director software package available today for PDA. This user guide will provide you with an overview of each section. Once you have completed this user guide you will be able to configure and modify old and new tournaments.

Key Features:

- ✓ Large blind timer display
- ✓ Large big and small blind display
- ✓ Blind schedule (20 levels)
- ✓ Configurable blind notification sound (plays mp3 or wave files)
- ✓ Chip value display
- ✓ Payout calculator
- ✓ Chip calculator
- ✓ Editable chip images
- ✓ Editable blind warning sound

Getting Started...

Big Slick Mobile Edition is split into four sections Action, Blinds, Chips and Payout Calculator. Each section groups related settings and functions, when running a tournament you may use all or some of these sections.

The Action section is used when the tournament is running. It contains a blind timer, blind values and chip values. This page will be discussed in detail in the **Action Section** (on page 2);

The Blinds section is also used when setting up the tournament. It contains the blind sound effect, and the blind schedule. This page will be discussed in detail in the **Blinds Section** (on page 4).

The Chips section is also used when setting up the tournament. It contains the chip images, values and totals. This page will be discussed in detail in the **Chips Section** (on page 5).

The Payout Calculator section is used once the tournament has been completed. It is a tool that makes it easy to determine payouts. This page will be discussed in detail in the **Payout Calculator Section** (on page 6).

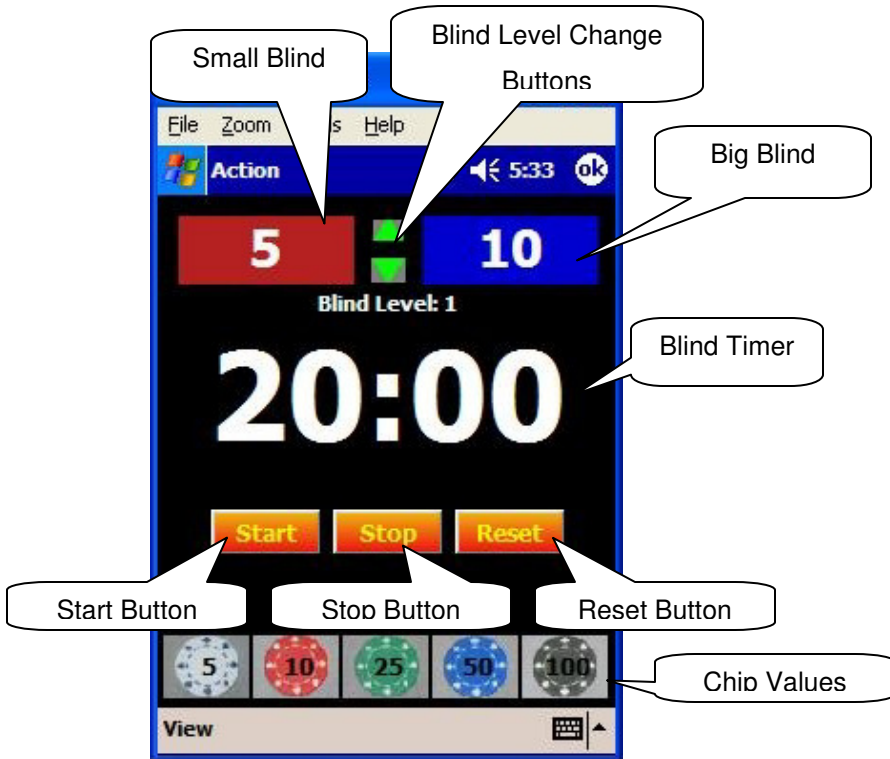
Main Screen...

The main screen provides access to the four sections of the program. When ever you exit a section it will return you to this screen.



Action Section...

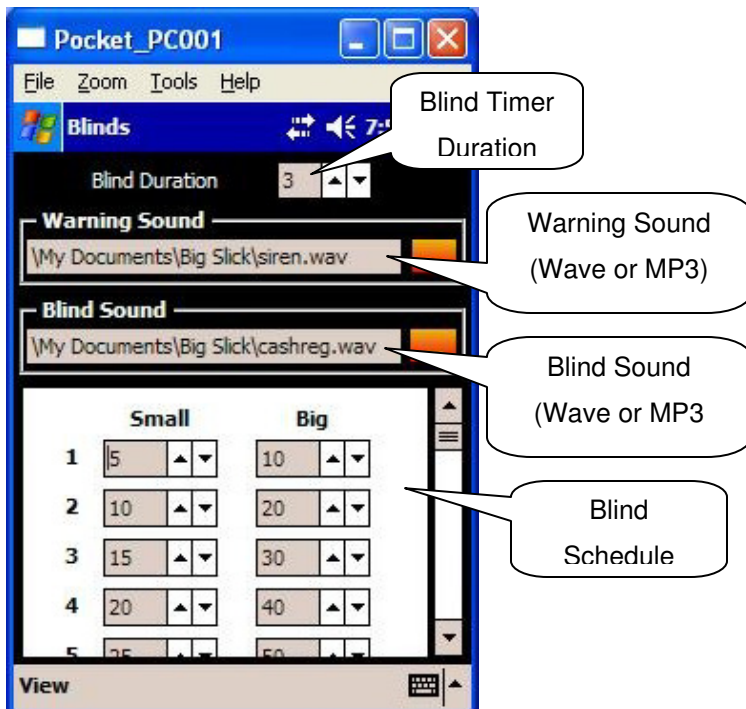
The Action section is used when the tournament is running. It contains the blind timer, blind values and chip values.



- ✓ Blind Timer: Time clock that on expiration indicates a blind level change.
- ✓ Blind Values: The current big (blue) and small (red) blinds.
- ✓ Chip Values: The chip values for the standard poker chip set.
- ✓ Start Button: Starts the blind timer.
- ✓ Stop Button: Stops the blind timer.
- ✓ Reset Button: Resets the blind timer to the blind timer value.
- ✓ Blind Level Change Buttons: These buttons change the blind levels to the last or next level.

Blinds Section...

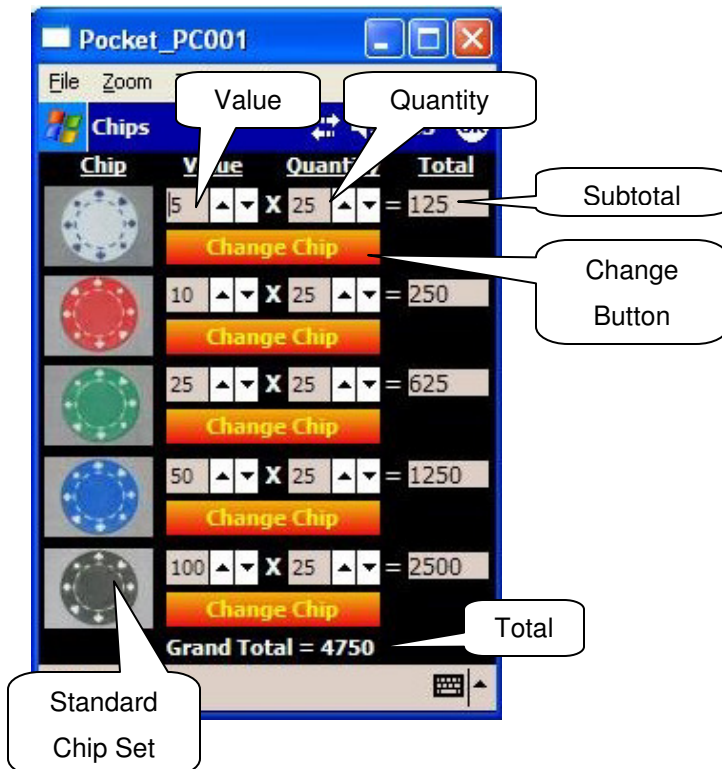
The Blinds Section is used to setup the blind schedule and blind sound for the tournament.



- ✓ Blind Sound: The sound that is played on blind timer expiration.
- ✓ Blind Timer: The blind timer duration.
- ✓ Blind Warning Sound: The sound that is played for a 1 minute warning before the blinds increase.
- ✓ Blind Schedule: Consists of 20 different blind levels. The program automatically steps through the blind levels when the blind timer expires.

Chip Selection Section...

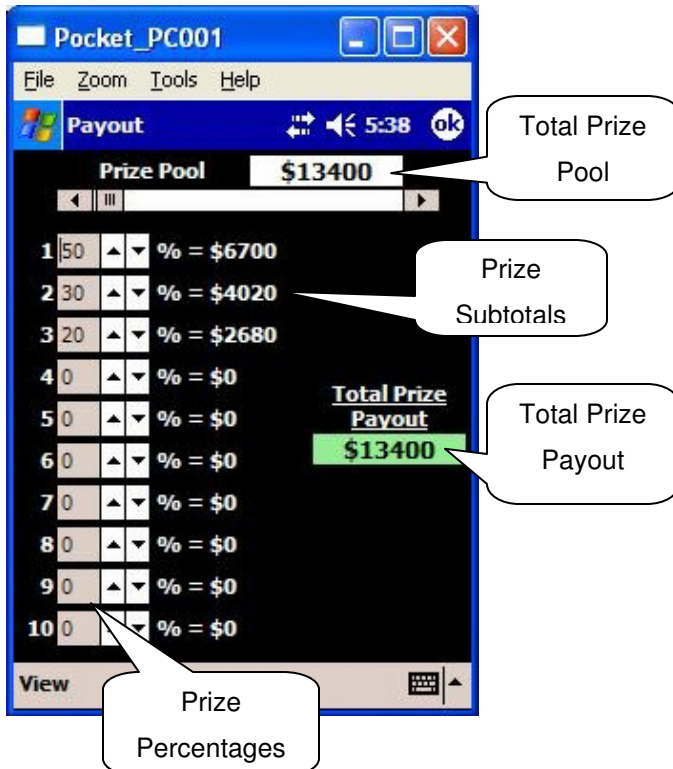
The Chip Selection Section (optional) is used to setup the tournaments chip values and quantities. This screen provides the user with the ability to easily tweak the chip quantities and values the desired total value.



- ✓ Standard Chip Set: The standard chip set is provide and includes black, green, blue, red and white.
- ✓ Value: The corresponding value of the chip.
- ✓ Quantity: The quantities of each chip used in the tournament.
- ✓ Subtotal: The total value of each color of chip (Value * Quantity).
- ✓ Total: The total off all the colors of chips.
- ✓ Change button: click this button to change chip images to your own.

Payout Calculator Section...

The Payout Calculator Section (optional) is used to determine the tournament payout structure. This screen provides an easy to use interface for adjust the payout percentages to determine what the payouts will be.



- ✓ Total Prize Pool: The tournaments total price amount.
- ✓ Prize Percentages: The tournaments top ten payout percentages.
- ✓ Prize Subtotals: The prize amount for each of the top ten payouts.
- ✓ Total Prize Payout: The sum of prize subtotals. This total payout will change to green when the prize payout equals the prize pool. If the prize payout is greater then the prize pool the total payout will turn red.